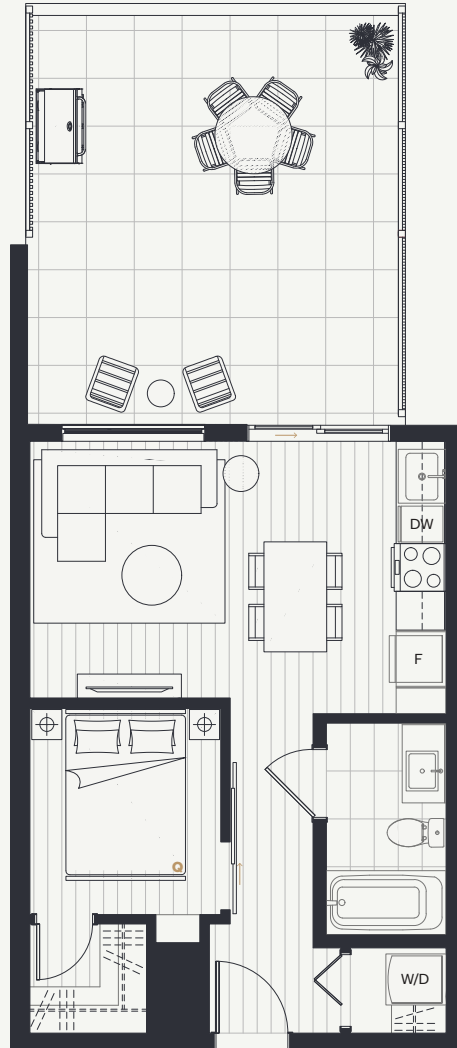


OAK & STONE

BY ABSTRACT



A1

Jr. 1 Bed + 1 Bath

Interior: 454 SF

Exterior: 259 SF

Total: 713 SF

LEVEL 1



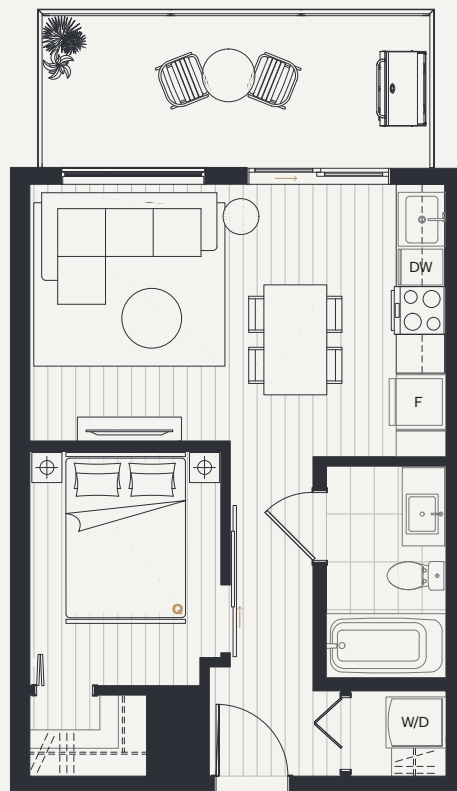
oakstonevictoria.com

Dimensions, sizes, specifications, layouts and materials are approximate only and subject to change without notice. E.&O.E.

 **ABSTRACT**

OAK & STONE

BY ABSTRACT



A1

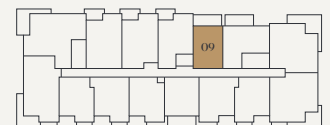
Jr. 1 Bed + 1 Bath

Interior: 454 SF

Exterior: 104 SF

Total: 558 SF

LEVEL 2-6



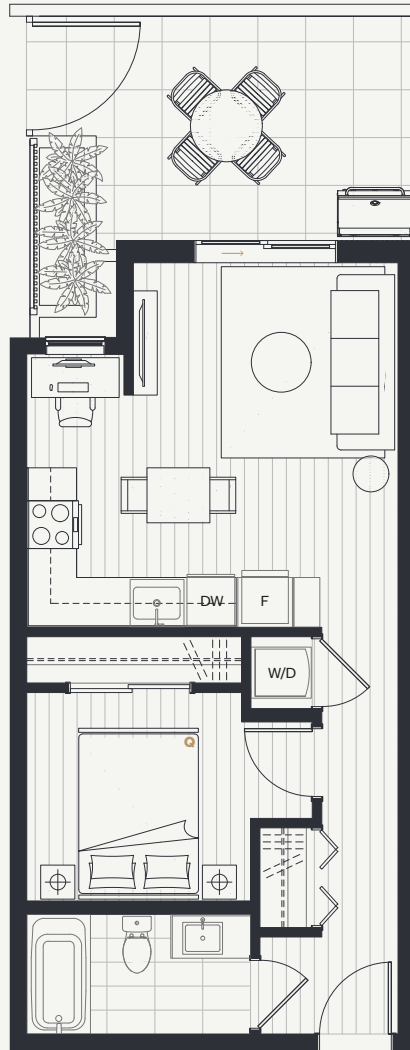
oakstonevictoria.com

Dimensions, sizes, specifications, layouts and materials are approximate only and subject to change without notice. E.&O.E.

 **ABSTRACT**

OAK & STONE

BY ABSTRACT



A2

Jr. 1 Bed + 1 Bath

Interior: 513 SF

Exterior: 137 SF

Total: 650 SF

LEVEL 1



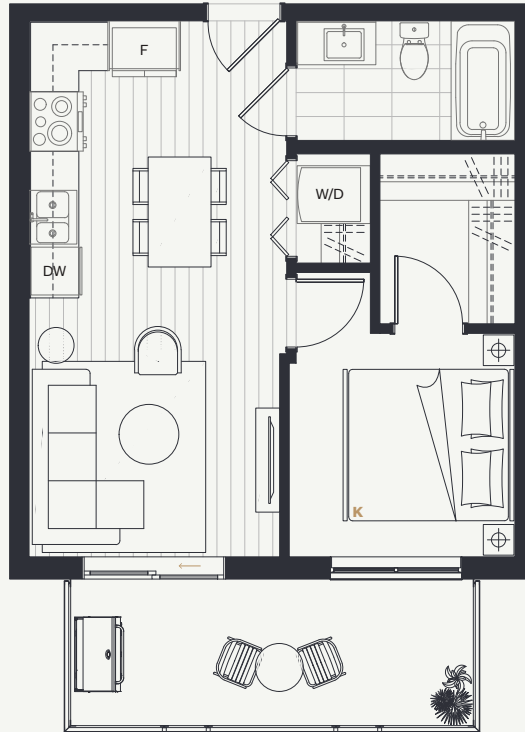
oakstonevictoria.com

Dimensions, sizes, specifications, layouts and materials are approximate only and subject to change without notice. E.&O.E.

 **ABSTRACT**

OAK & STONE

BY ABSTRACT



B1

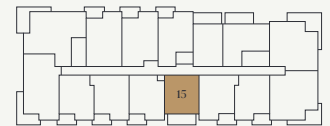
1 Bed + 1 Bath

Interior: 484 SF

Exterior: 103 SF

Total: 587 SF

LEVEL 2-6



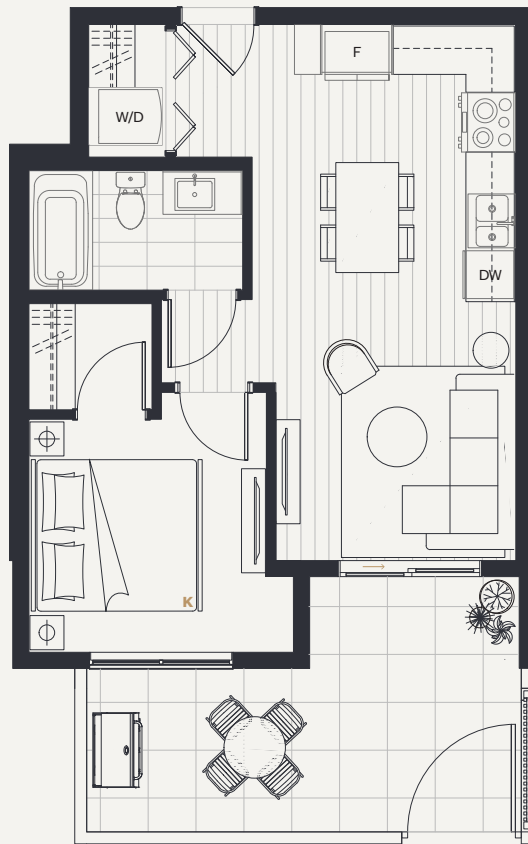
oakstonevictoria.com

Dimensions, sizes, specifications, layouts and materials are approximate only and subject to change without notice. E.&O.E.

 **ABSTRACT**

OAK & STONE

BY ABSTRACT



B2

1 Bed + 1 Bath

Interior: 516 SF

Exterior: 151 SF

Total: 667 SF

LEVEL 1



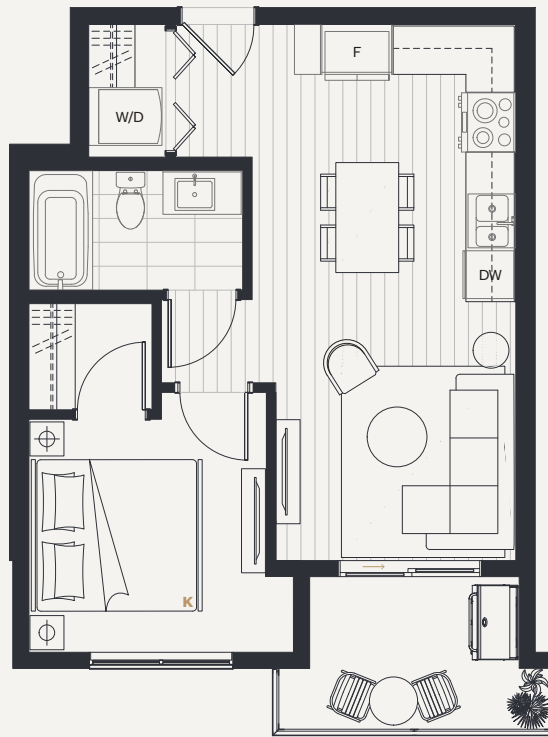
oakstonevictoria.com

Dimensions, sizes, specifications, layouts and materials are approximate only and subject to change without notice. E.&O.E.

 **ABSTRACT**

OAK & STONE

BY ABSTRACT



B2

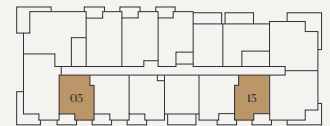
1 Bed + 1 Bath

Interior: 516 SF

Exterior: 59 - 63 SF

Total: 575 - 579 SF

LEVEL 2-6



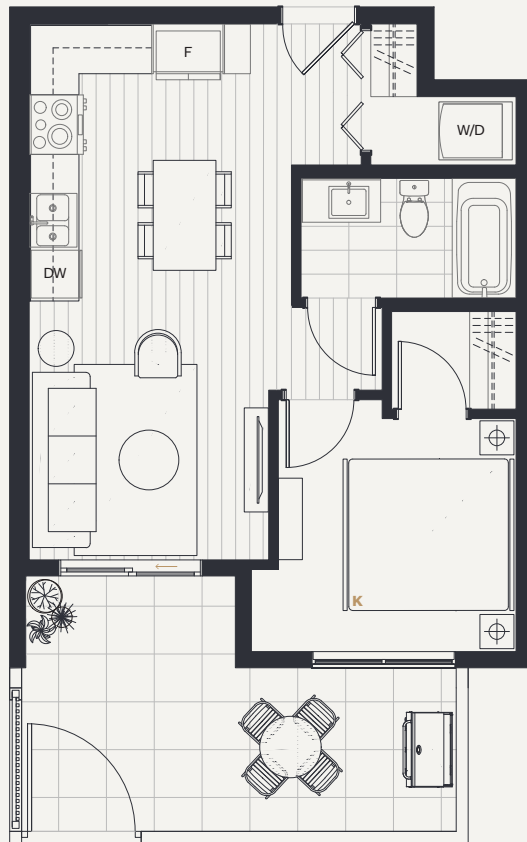
oakstonevictoria.com

Dimensions, sizes, specifications, layouts and materials are approximate only and subject to change without notice. E.&O.E.

 **ABSTRACT**

OAK & STONE

BY ABSTRACT



B3

1 Bed + 1 Bath

Interior: 518 SF

Exterior: 152 SF

Total: 670 SF

LEVEL 1



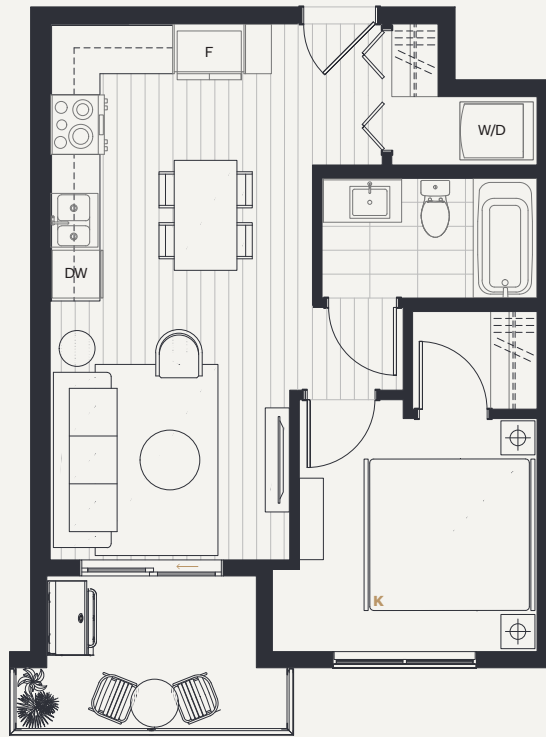
oakstonevictoria.com

Dimensions, sizes, specifications, layouts and materials are approximate only and subject to change without notice. E.&O.E.

 **ABSTRACT**

OAK & STONE

BY ABSTRACT



B3

1 Bed + 1 Bath

Interior: 518 SF

Exterior: 59 - 63 SF

Total: 577 - 581 SF

LEVEL 2-6



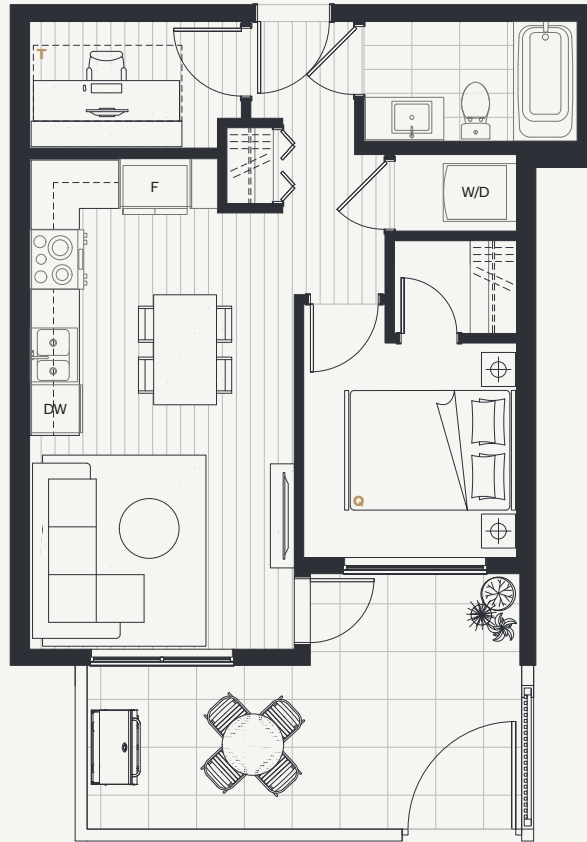
oakstonevictoria.com

Dimensions, sizes, specifications, layouts and materials are approximate only and subject to change without notice, E.&O.E.

 **ABSTRACT**

OAK & STONE

BY ABSTRACT



C1

1 Bed + Den + 1 Bath

Interior: 546 SF

Exterior: 151 SF

Total: 697 SF

LEVEL 1



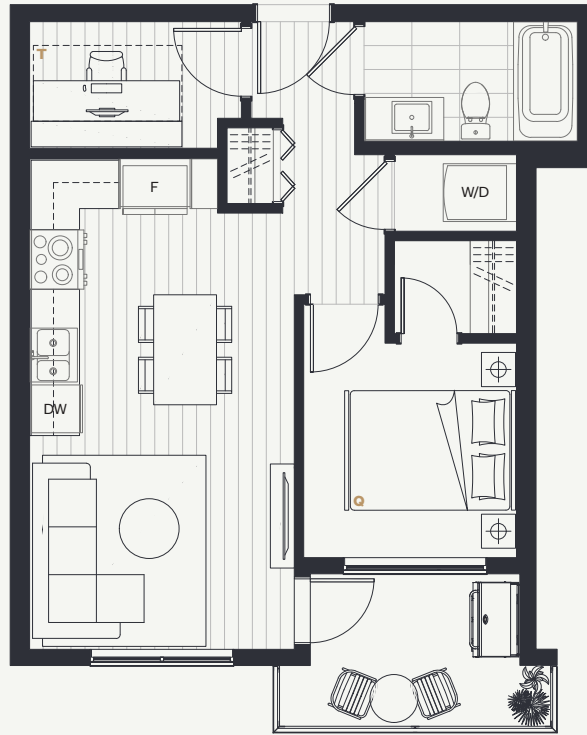
oakstonevictoria.com

Dimensions, sizes, specifications, layouts and materials are approximate only and subject to change without notice. E.&O.E.

 **ABSTRACT**

OAK & STONE

BY ABSTRACT



C1

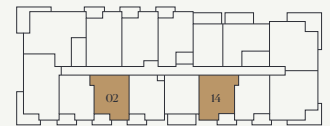
1 Bed + Den + 1 Bath

Interior: 546 SF

Exterior: 59 - 63 SF

Total: 605 - 609 SF

LEVEL 2-6



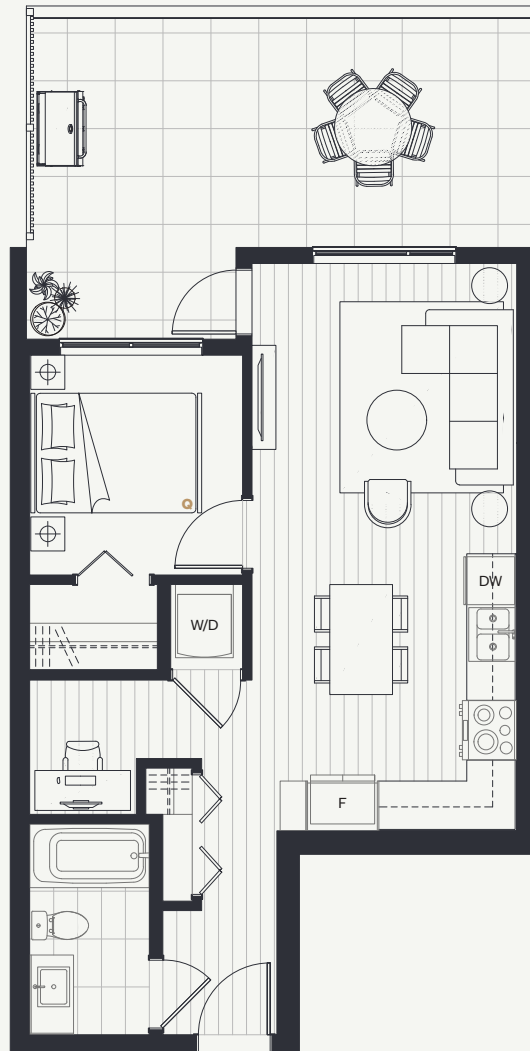
oakstonevictoria.com

Dimensions, sizes, specifications, layouts and materials are approximate only and subject to change without notice. E.&O.E.

 ABSTRACT

OAK & STONE

BY ABSTRACT



C2

1 Bed + Den + 1 Bath

Interior: 578 SF

Exterior: 228 SF

Total: 806 SF

LEVEL 1



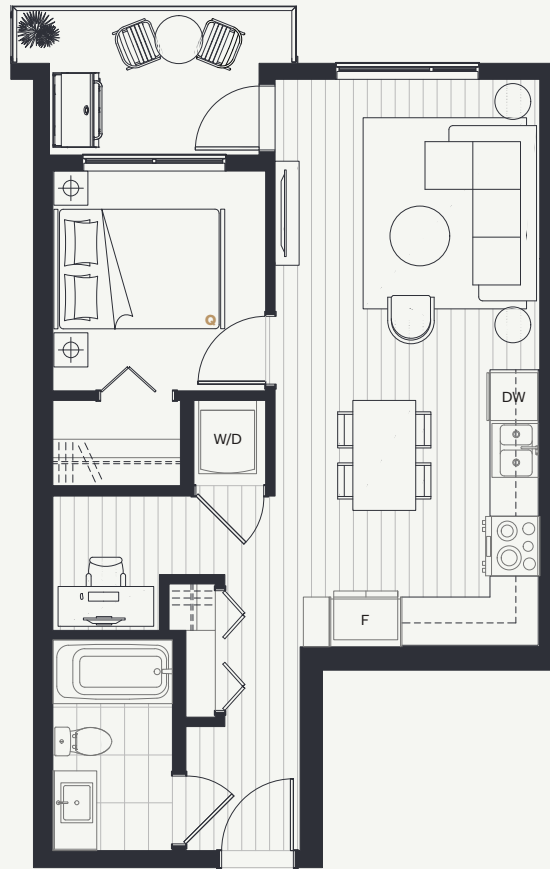
oakstonevictoria.com

Dimensions, sizes, specifications, layouts and materials are approximate only and subject to change without notice. E.&O.E.

 **ABSTRACT**

OAK & STONE

BY ABSTRACT



C2

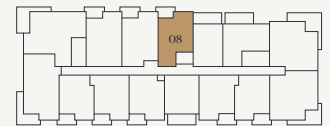
1 Bed + Den + 1 Bath

Interior: 578 SF

Exterior: 59 - 62 SF

Total: 637 - 640 SF

LEVEL 2-6



oakstonevictoria.com

Dimensions, sizes, specifications, layouts and materials are approximate only and subject to change without notice. E.&O.E.

 **ABSTRACT**

OAK & STONE

BY ABSTRACT



C3

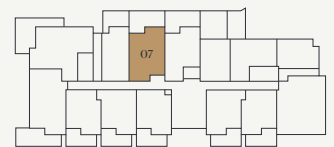
1 Bed + Den + 2 Bath

Interior: 643 SF

Exterior: 234 SF

Total: 877 SF

LEVEL 1



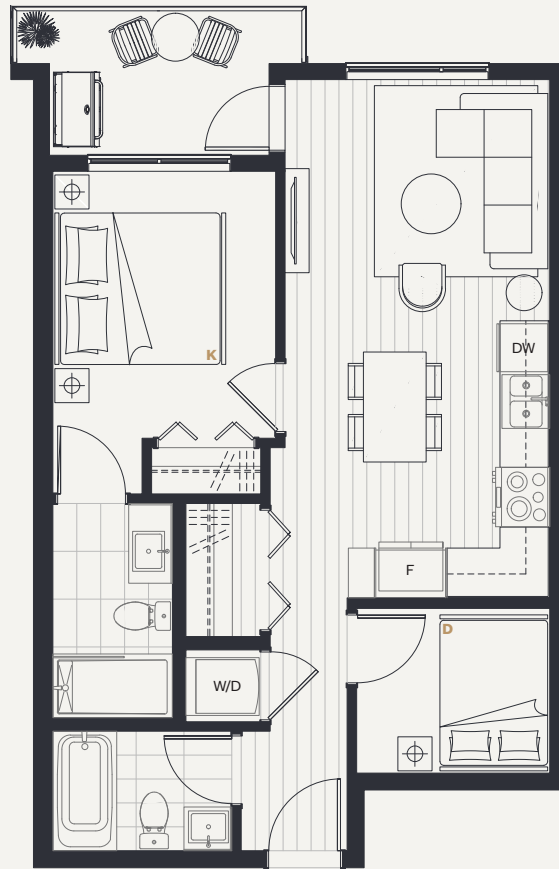
oakstonevictoria.com

Dimensions, sizes, specifications, layouts and materials are approximate only and subject to change without notice. E.&O.E.

 **ABSTRACT**

OAK & STONE

BY ABSTRACT



C3

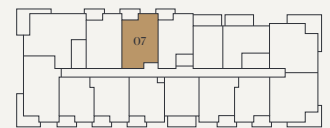
1 Bed + Den + 2 Bath

Interior: 643 SF

Exterior: 61 - 65 SF

Total: 704 - 708 SF

LEVEL 2-6



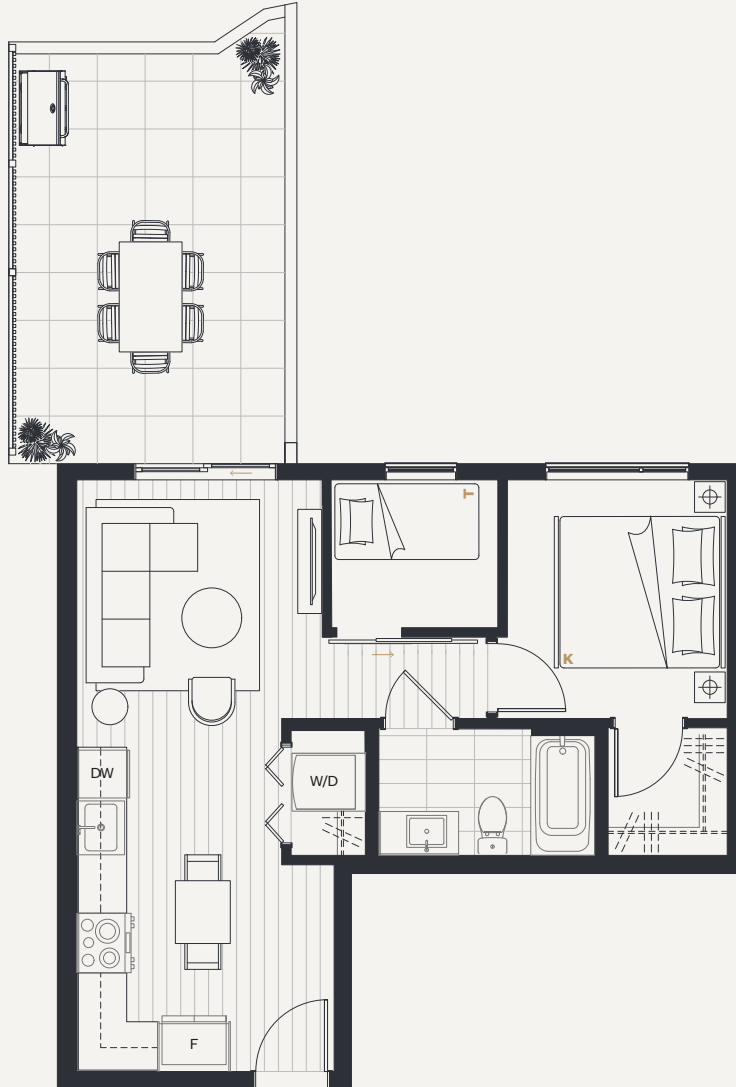
oakstonevictoria.com

Dimensions, sizes, specifications, layouts and materials are approximate only and subject to change without notice. E.&O.E.

 ABSTRACT

OAK & STONE

BY ABSTRACT



D1

Jr. 2 Bed + 1 Bath

Interior: 562 SF

Exterior: 194 SF

Total: 756 SF

LEVEL 1



oakstonevictoria.com

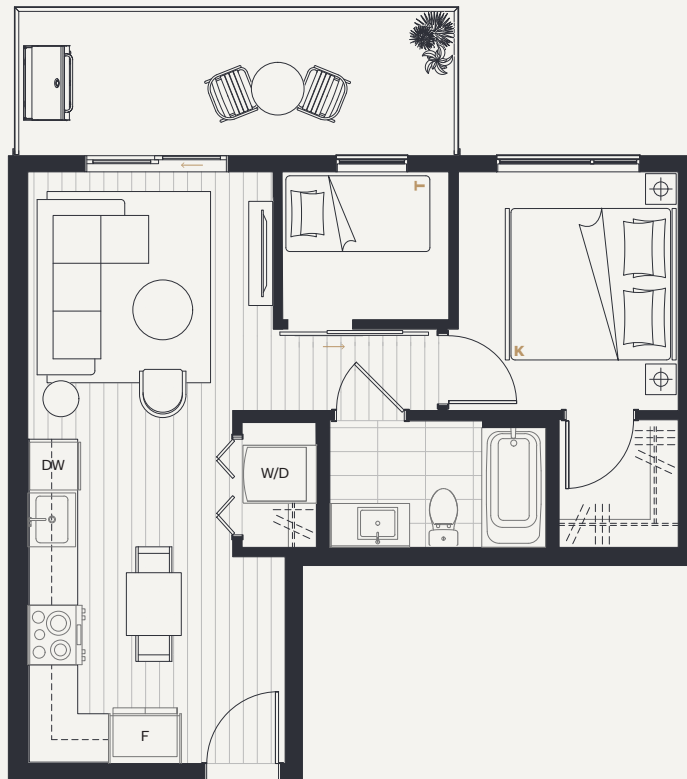
Dimensions, sizes, specifications, layouts and materials are approximate only and subject to change without notice. E.&O.E.



ABSTRACT

OAK & STONE

BY ABSTRACT



D1

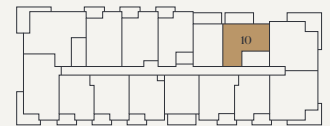
Jr. 2 Bed + 1 Bath

Interior: 562 SF

Exterior: 102 - 110 SF

Total: 664 - 672 SF

LEVEL 2-6



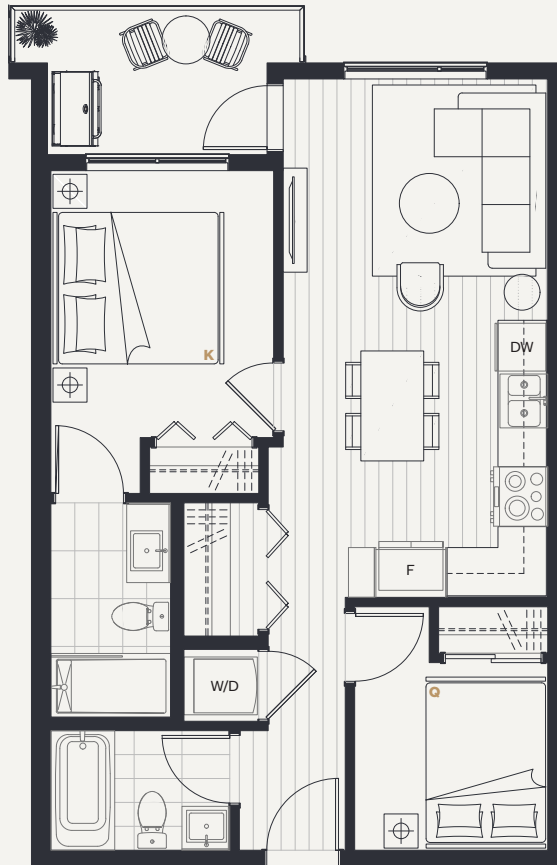
oakstonevictoria.com

Dimensions, sizes, specifications, layouts and materials are approximate only and subject to change without notice. E.&O.E.

 **ABSTRACT**

OAK & STONE

BY ABSTRACT



E1

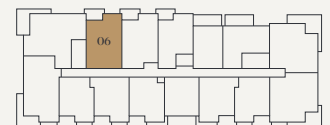
Jr. 2 Bed + 2 Bath

Interior: 670 SF

Exterior: 61 - 65 SF

Total: 731 - 735 SF

LEVEL 2-6



oakstonevictoria.com

Dimensions, sizes, specifications, layouts and materials are approximate only and subject to change without notice. E.&O.E.

 ABSTRACT

OAK & STONE

BY ABSTRACT



2 Bed + 2 Bath

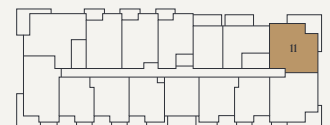
F1

Interior: 791 SF

Exterior: 167 - 182 SF

Total: 958 - 973 SF

LEVEL 2-6



oakstonevictoria.com

Dimensions, sizes, specifications, layouts and materials are approximate only and subject to change without notice. E.&O.E.

 **ABSTRACT**

OAK & STONE

BY ABSTRACT



F2

2 Bed + 2 Bath

Interior: 797 SF

Exterior: 108 - 120 SF

Total: 905 - 917 SF

LEVEL 2-6



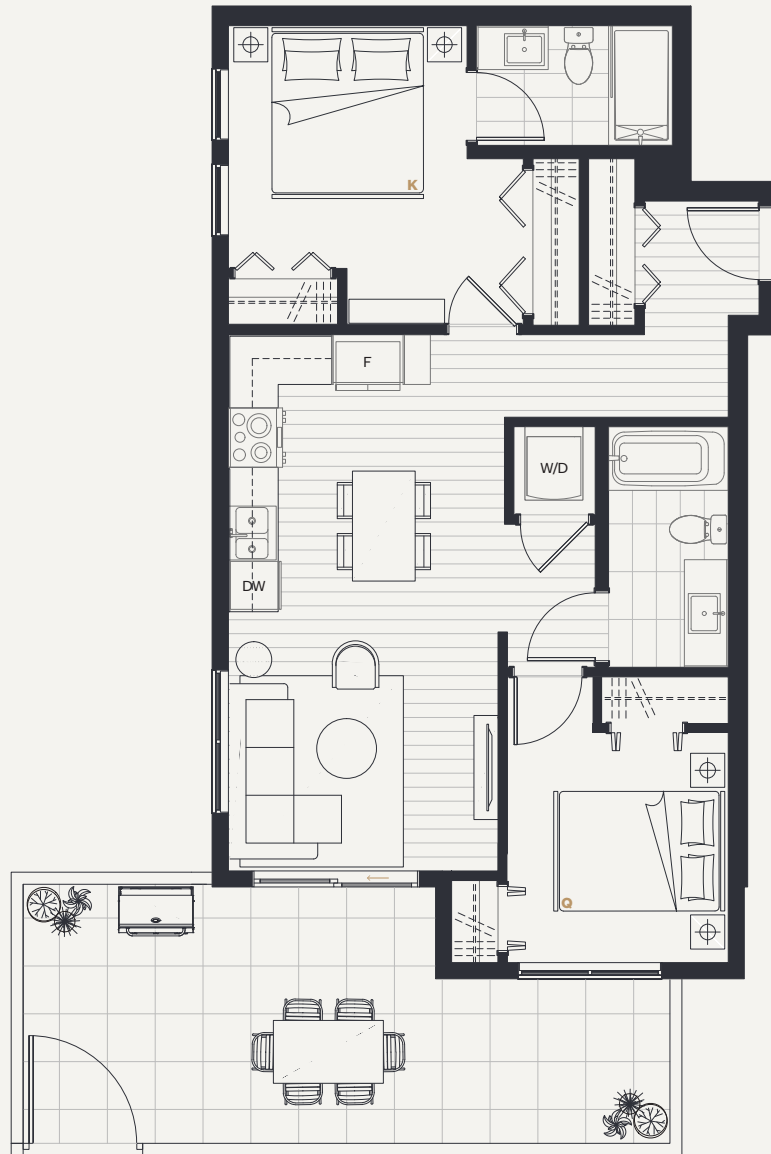
oakstonevictoria.com

Dimensions, sizes, specifications, layouts and materials are approximate only and subject to change without notice. E.&O.E.

 **ABSTRACT**

OAK & STONE

BY ABSTRACT



F3

2 Bed + 2 Bath

Interior: 814 SF

Exterior: 129 - 140 SF

Total: 943 - 954 SF

LEVEL 1



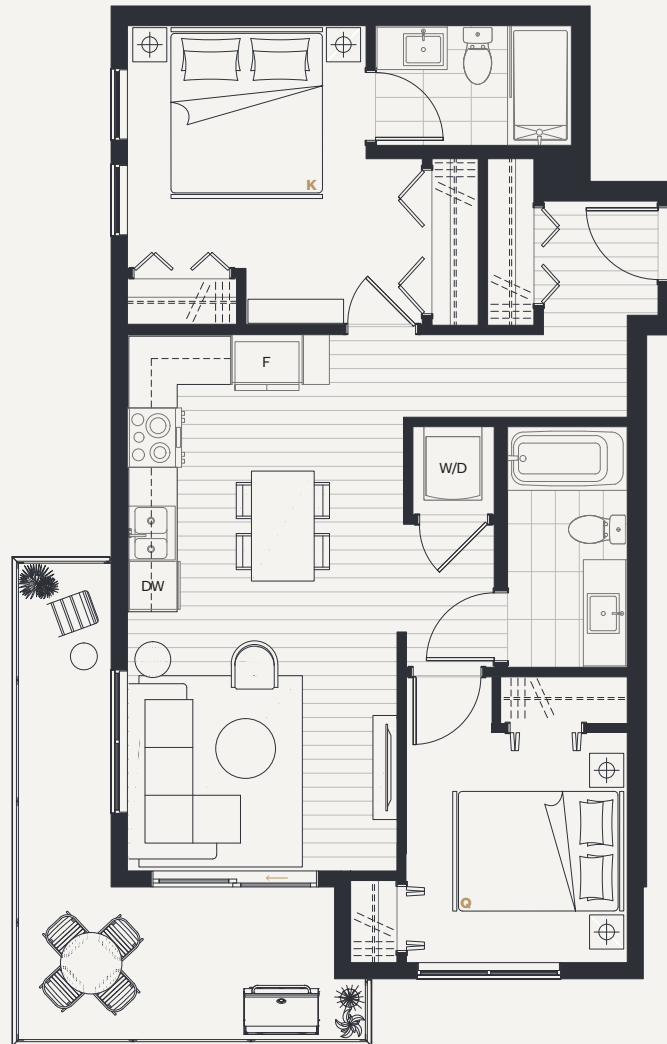
oakstonevictoria.com

Dimensions, sizes, specifications, layouts and materials are approximate only and subject to change without notice. E.&O.E.

 **ABSTRACT**

OAK & STONE

BY ABSTRACT



F3

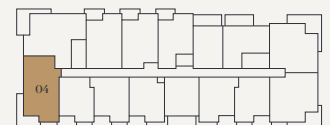
2 Bed + 2 Bath

Interior: 814 SF

Exterior: 129 - 140 SF

Total: 943 - 954 SF

LEVEL 2-6



oakstonevictoria.com

Dimensions, sizes, specifications, layouts and materials are approximate only and subject to change without notice. E.&O.E.

 **ABSTRACT**

OAK & STONE

BY ABSTRACT



F4

2 Bed + 2 Bath

Interior: 902 SF

Exterior: 321 SF

Total: 1,223 SF

LEVEL 1



oakstonevictoria.com

Dimensions, sizes, specifications, layouts and materials are approximate only and subject to change without notice, E.&O.E.

 **ABSTRACT**

OAK & STONE

BY ABSTRACT



F4

2 Bed + 2 Bath

Interior: 902 SF

Exterior: 142 - 154 SF

Total: 1,044 - 1,056 SF

LEVEL 2-6



oakstonevictoria.com

Dimensions, sizes, specifications, layouts and materials are approximate only and subject to change without notice, E.&O.E.

 **ABSTRACT**