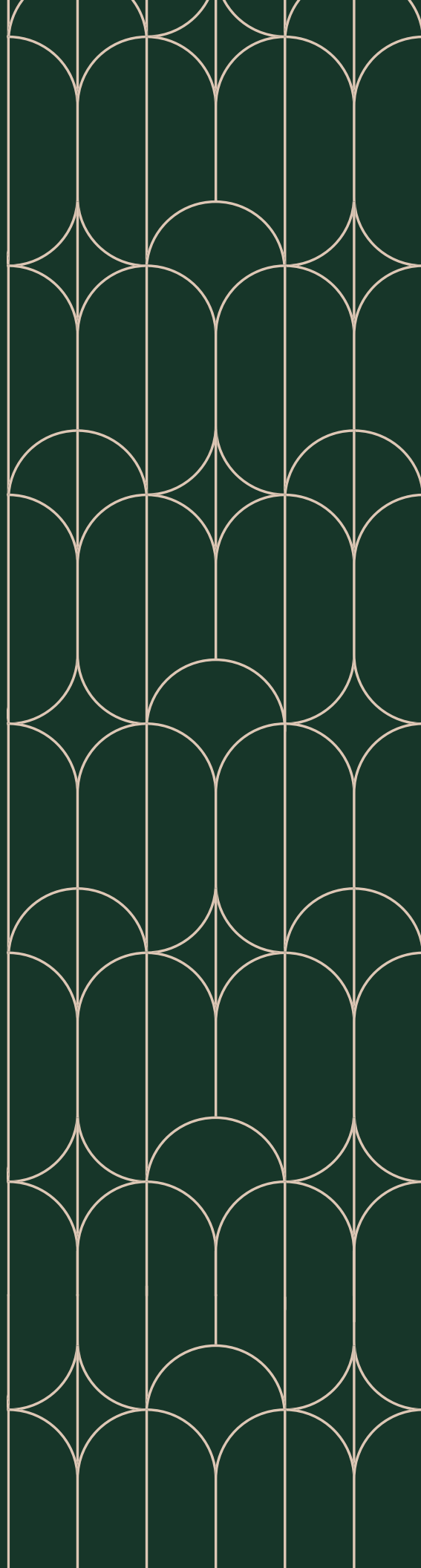


Every Moment Inspired



GREYSON

BY ABSTRACT





greysontownhomes.com

Welcome Home

Home is a place that should be warm and inviting, one you are excited to return to at the end of the day. Greyson brings this belief to life, with a thoughtful collection of traditional townhomes that instill a sense of calm and comfort at every angle.





A NEIGHBOURHOOD THAT IS

Vibrant & Amenity Rich

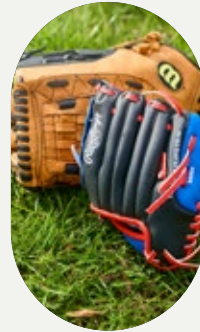


greysontownhomes.com



The already well-established Uptown neighbourhood is one that continues to burgeon and flourish. A lush residential setting complemented by parks and schools is balanced by a diversifying tapestry of local businesses and amenities.

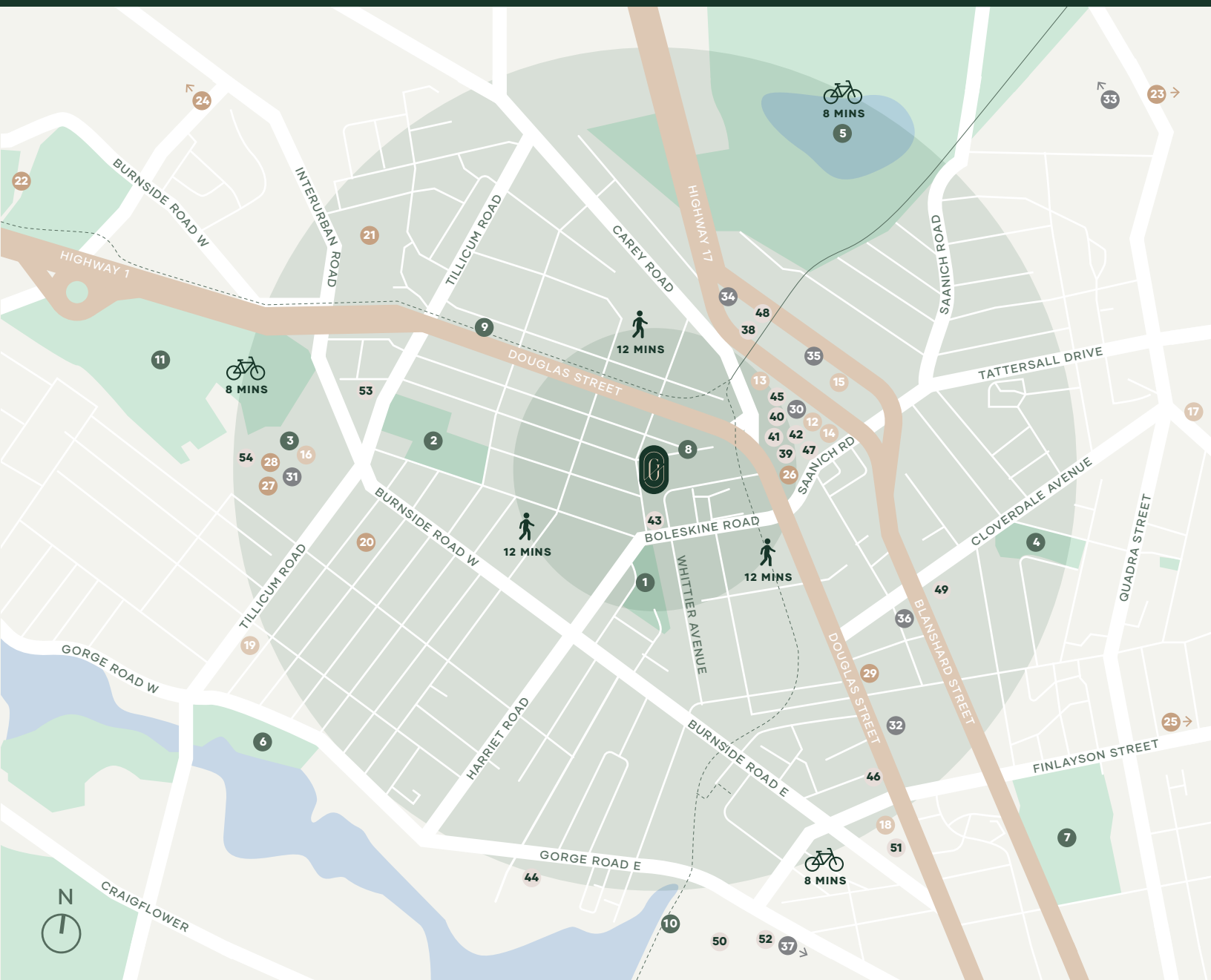
Centred between the city's outer limits and the downtown core, the Uptown neighbourhood stands to become the new heart of Victoria, a destination rich in experiences including shopping, recreation, dining, and socializing.



Neighbourhood Map



- Lochside Trail
- - - Galloping Goose Trail



Neighbourhood Highlights



RECREATION & OUTDOORS

- 1 Rudd Park
- 2 Hampton Park
- 3 Pearkes Recreation
- 4 Rutledge Park
- 5 Swan Lake
- 6 Saanich Gorge Park
- 7 Topaz Park
- 8 Taylor Park
- 9 Galloping Goose Trail
- 10 Selkirk Trestle
- 11 Cuthbert Holmes Park

GROCERIES & ESSENTIALS

- 12 Walmart
- 13 Whole Foods
- 14 Shoppers Drug Mart
- 15 Save on Foods
- 16 London Drugs
- 17 Thrifty Foods
- 18 Lifestyle Markets
- 19 Fairway Market

EDUCATION & CHILD CARE

- 20 Tillicum Elementary (K-5)
- 21 Colquitz Middle School (6-8)
- 22 Spectrum Community School (9-12)
- 23 University of Victoria (UVIC)
- 24 Camosun College Interurban
- 25 Camosun College Lansdowne
- 26 Kids & Company
- 27 Kids Klub Centre
- 28 The Greater Victoria Public Library
– Saanich Centennial Branch
- 29 CEFA Early Learning

SHOPPING & SERVICES

- 30 Uptown Centre
- 31 Tillicum Centre
- 32 Mayfair Shopping Centre
- 33 Saanich Centre
- 34 Gateway Village
- 35 Saanich Plaza
- 36 HomeSense
- 37 Russ Hay's The Bicycle Shop

FOOD & ENTERTAINMENT

- 38 Big Wheel Burger
- 39 Brown's Social House
- 40 The Chopped Leaf
- 41 The Noodle Box
- 42 Kinu by Sizzling Tandoor
- 43 Uptown Bistro
- 44 Floyd's Diner
- 45 Crust Bakery
- 46 The Ruby on Douglas
- 47 Ono Poké
- 48 Yoshi Sushi
- 49 Bin 4 Burger Lounge
- 50 Glo Restaurant and Bar
- 51 Ramen Arashi Victoria
- 52 Île Sauvage Brewery
- 53 Mr. Tubbs Ice Cream Parlor
- 54 SilverCity Victoria Cinemas

A CHERISHED



greysonto whomes.com

Place to Call Home

Welcoming exteriors provide an immediate sense of arrival, with traditional architectural influences inspired by that of a single-family home. Individual outdoor spaces are encompassed by pleasing white picket fences and lush landscaping reflective of the area's surroundings.

A considerate site design maximizes light and outdoor space for each home while establishing privacy between neighbours and encouraging social interaction.

3450 WHITTIER AVENUE





Naturally Inspired Spaces

Elegant interiors don't need to be at the expense of function and durability. Interiors encompass naturally inspired elements that feel sophisticated yet grounded, offering spaces that feel great to spend time in, with high-quality materials and finishes designed to stand the test of time.





Designed for Effortless Days

Well-considered details are at every turn, from thoughtfully oriented living spaces that balance the ideals of connection and privacy, with over-height ceilings and generous windows, down to the finer details, like premium interior finishes and carefully selected features.





Two Natural Palettes

Two inspiring interior colour palettes reflect a timeless and contemporary West Coast design aesthetic, with warm whites and calming greys grounded by natural oak tones and textured stone elements.

LIGHT PALETTE

Warm linen whites offer peace and comfort



MEDIUM PALETTE

Calming greys instill a sense of grounding



Thoughtful Floorplans

Following is a sample of the plans available at Greyson. More are available by scheduling an appointment with:

GREYSON SALES TEAM

Tel 250.590.5130

info@greysontownhomes.com

greysontownhomes.com





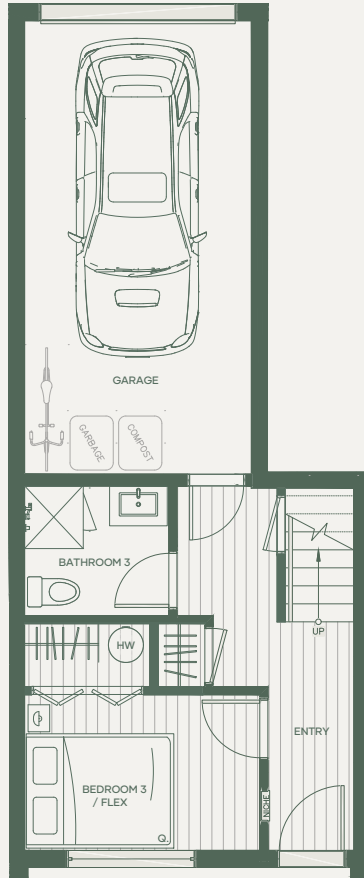
GREYSON

BY ABSTRACT

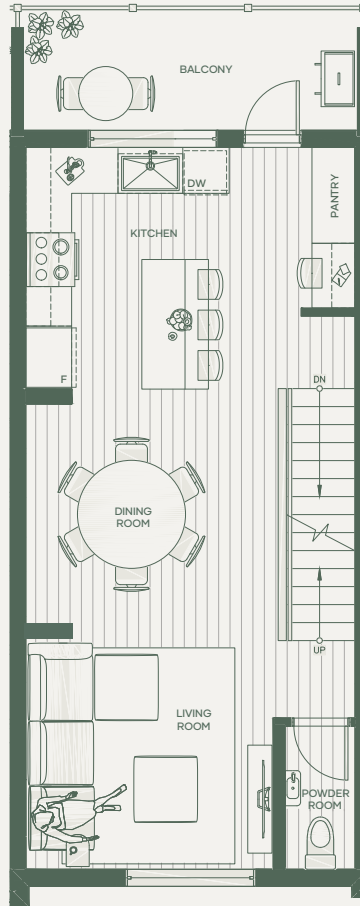
Townhome 2 A2

**3 BEDROOM
3.5 BATHROOM**

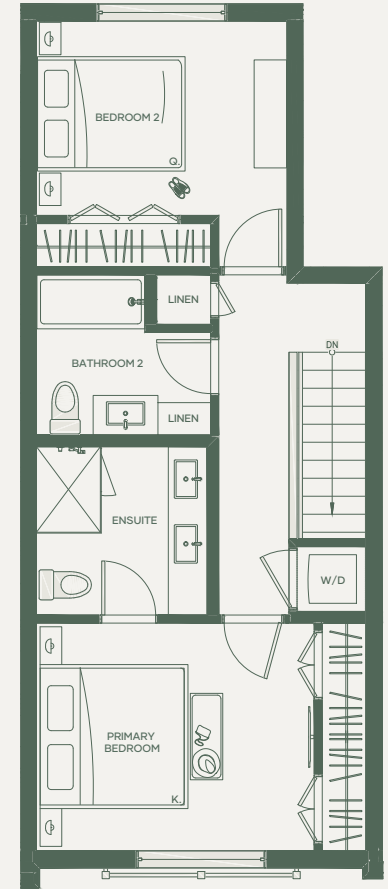
Interior 1,415 sf
Exterior 85 sf
Total 1,500 sf



Lower
282 sf



Main
549 sf



Upper
584 sf



greysontownhomes.com

Dimensions, sizes, specifications, layouts and materials are approximate only and subject to change without notice. E.&O.E.

ABSTRACT
developments



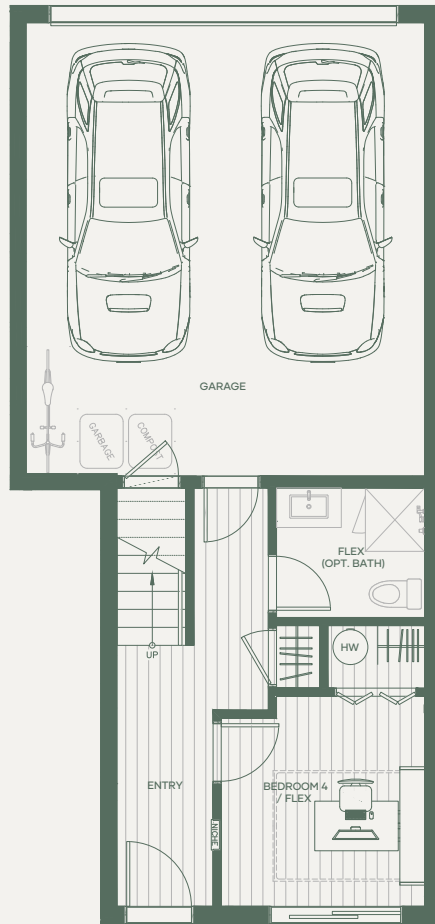
GREYSON

BY ABSTRACT

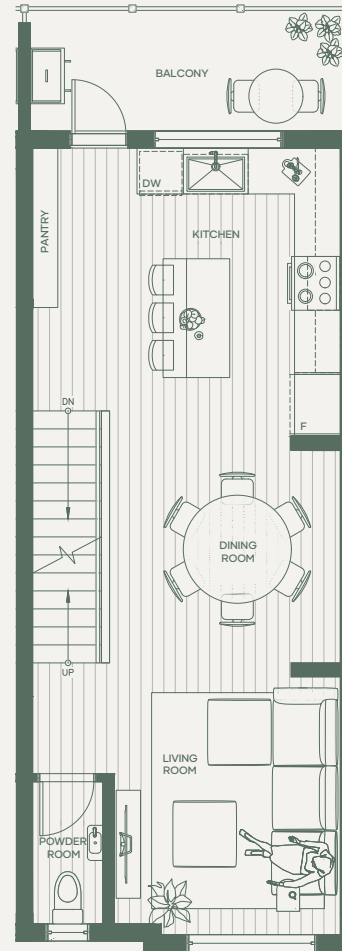
Townhome 10 B5

**4 BEDROOM
2.5 BATHROOM**

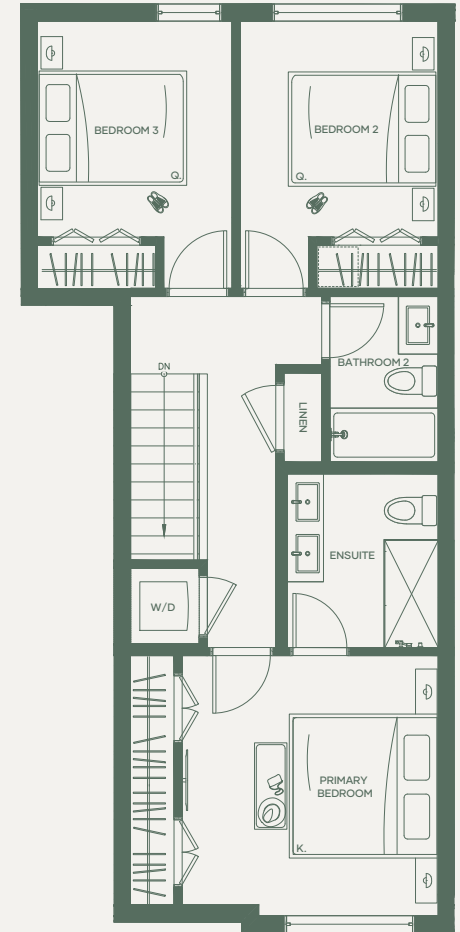
Interior 1,545 sf
Exterior 80 sf
Total 1,625 sf



Lower
301 sf



Main
556 sf



Upper
688 sf



greysontownhomes.com

Dimensions, sizes, specifications, layouts and materials are approximate only and subject to change without notice. E.&O.E.

ABSTRACT
developments



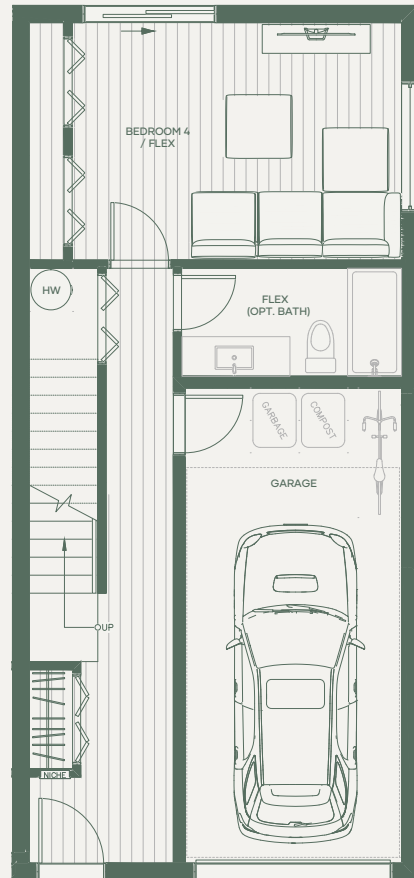
GREYSON

BY ABSTRACT

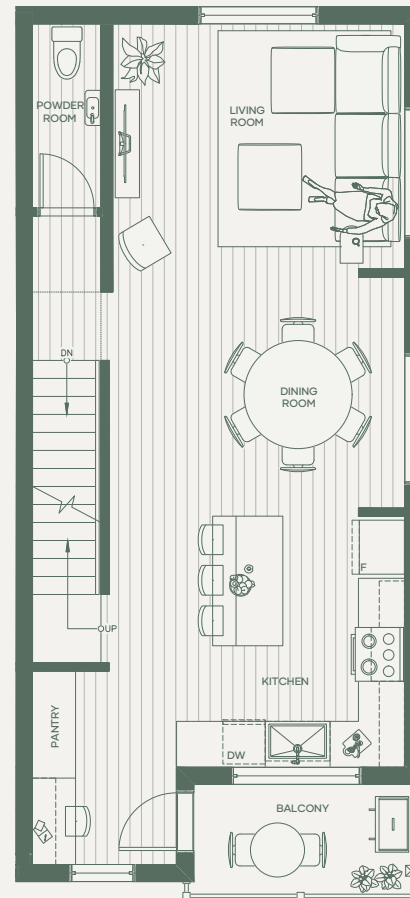
Townhome 23 C4

**4 BEDROOM
2.5 BATHROOM**

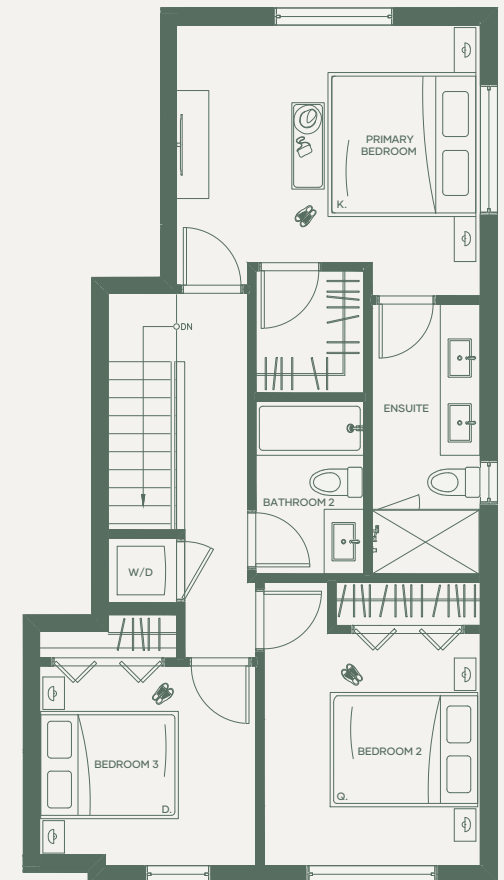
Interior 1,858 sf
Exterior 50 sf
Total 1,908 sf



Lower
475 sf



Main
670 sf



Upper
713 sf



greysontownhomes.com

Dimensions, sizes, specifications, layouts and materials are approximate only and subject to change without notice. E.&O.E.

ABSTRACT
developments

Site Plan



A
 3 BEDROOM
 3.5 BATHROOM
 1 CAR GARAGE

B
 4 BEDROOM
 2.5 BATHROOM
 2 CAR GARAGE

C
 4 BEDROOM
 2.5 BATHROOM
 1 CAR GARAGE



Creating Iconic Spaces



greysontownhomes.com

Abstract Developments doesn't just construct homes, we help build communities. Our meticulous, time-tested development process spans years—from the initial concept through to completion and is driven by personal engagement with a variety of stakeholders to design meaningful residences that contribute to the local community. Since 1999, Abstract has built more than 600 single and multi-family homes in neighbourhoods across Greater Victoria.

PAST TOWNHOME SUCCESSSES



BELLEWOOD PARK
9 Townhomes
Completed 2022



AVERY LANE
16 Townhomes
Completed 2020



LONDON ARBOUR
14 Townhomes
Completed 2016



**BROWNSTONE
TOWNHOMES**
6 Townhomes
Completed 2012



TERRA VERDE
16 Townhomes
Completed 2010



GREYSON

BY ABSTRACT

GREYSON SALES TEAM

Tel 250.590.5130

info@greysontownhomes.com

greysontownhomes.com



ABSTRACT
developments

